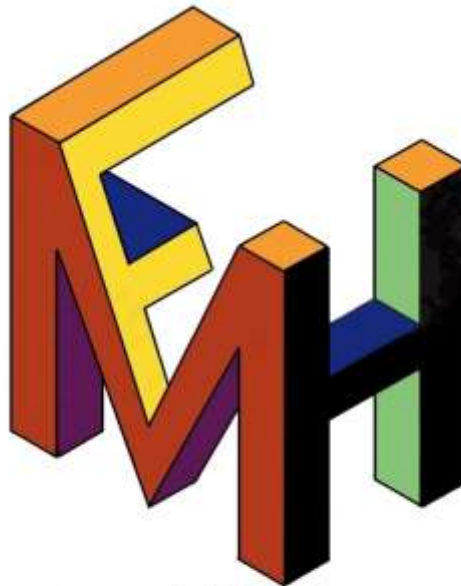




Mariposa

Desktop Enterprise Resource Management System

by



MHF
INFORMATION
SYSTEMS

Contents

Introduction.....	3
-------------------	---

Introduction

Mariposa is an Enterprise Resource Planning (ERP) system, developed by MHF Information Systems, of which I am the founder.

ENTERPRISES are big things. Resource planning and management are the biggest reasons why enterprises might succeed or might fail. The importance of correct planning and utilization of resources, in short, cannot be overstated.

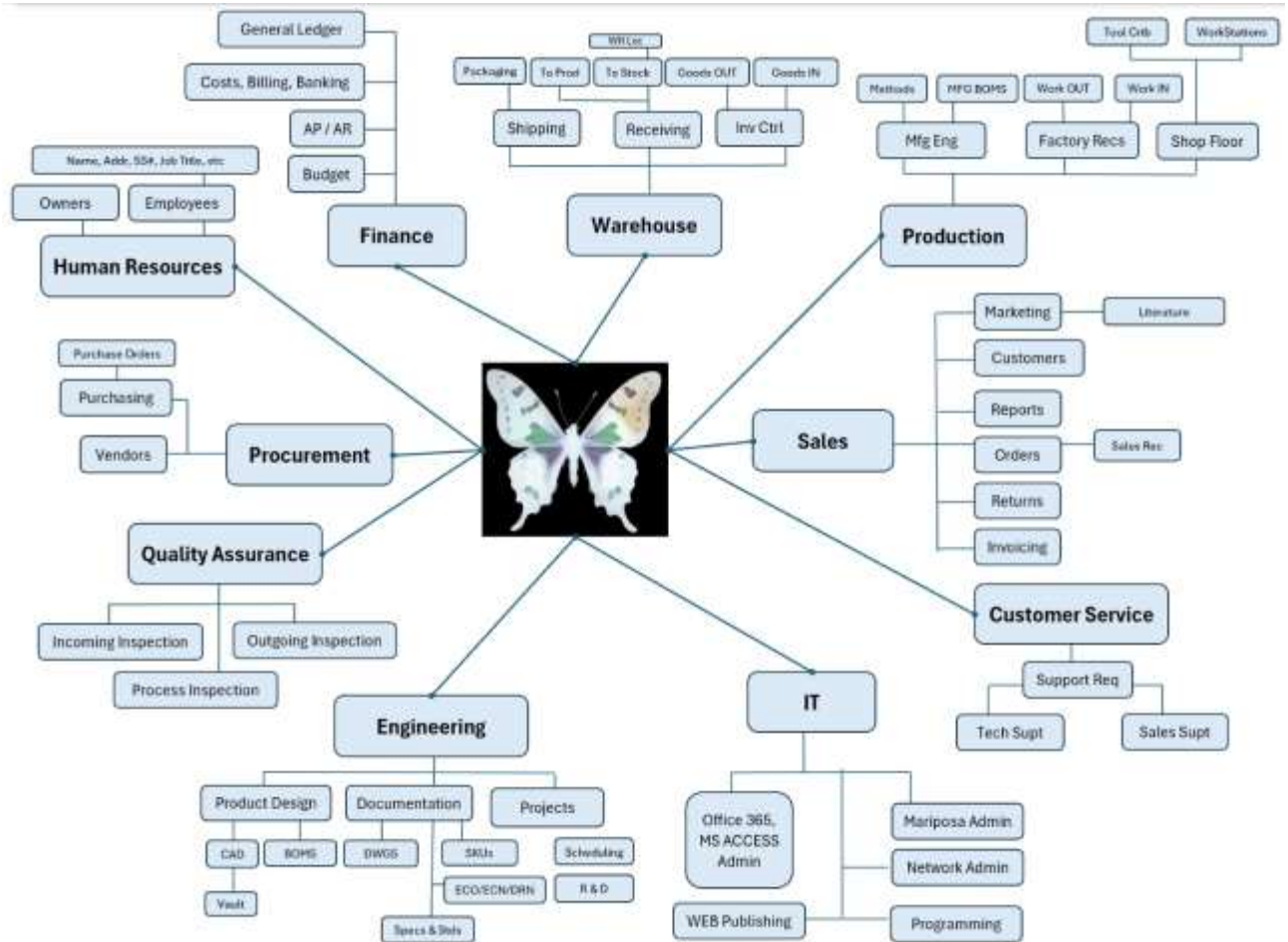
Mariposa has connections to all the major departments in your organization. Mariposa allows people to share information instantly. Each user is known in the system and each user has certain rights within the system, from READ ONLY to ADD, DELETE, MODIFY.

I designed Mariposa (Mari for short) after decades of experience in the design, engineering, and manufacturing world, emulating the types of systems that the companies I worked for were paying enormous money to buy. They would try to fit their business model into these systems – while paying programmers, analysts, and key people to do so. Ultimately, the sacrifices the companies had to make in order to fit their practices into these systems were too costly. In 8 years I saw 3 such projects fail, at an uncountable cost to the company in manhours, money, and time lost. Yet, we know that digitized ERP systems can be of enormous value to a company. The days of pencils and 3 hole binders may not be completely gone, but their roles have been largely replaced by digital electronic systems.

While those ERP projects were being planned and developed, I designed my own system (MANGO) all on my own. I saw the weaknesses in the commercial systems (Syteline, Friedman Frontier, Epicore, PIC). I saw how work was done, and designed MANGO around that workflow, rather than the other way around. In each case, after months of planning, they severed relations with the providers of the ERPs and abandoned the new systems. Over 8 years, it happened 3 times. Yet, they never abandoned MANGO which I had running in the first few months of my employment and continued developing it over years.

From my experience in these fields and working on these projects – learning all I could about ERP systems and how to make them, I developed programs called JSMAN and MANGO. Mariposa, a multi-user ERP system built on an MS ACCESS platform, is the combination of these systems and all my learning and experience. I can cover almost any function within a company. It's extremely versatile. It's modular so that functions and enhancements are easy to add later, starting with the basic Mari, and different departments can have different interfaces, and different users can have different rights within the system – Mariposa.

Mariposa System Map:



The System Map above shows many POSSIBLE “nodes” from Mari into different departments. It is easy to change the names of things while retaining the functionality that I have developed. A node is any juncture of lines. Mari is a Relational Data Base (RDBS) so that information is standardized, normalized, and redundancy is eliminated.

Mariposa is a multi-user system. It can support many users or it can also function as a standalone for a single user.

The design of Mari allows very easy sharing of information within the system. From any node in the diagram above, an Item can be traced to any other node (ball at the end of the connecting lines).

Each user within the system has certain rights to access different nodes.